

IWGSC

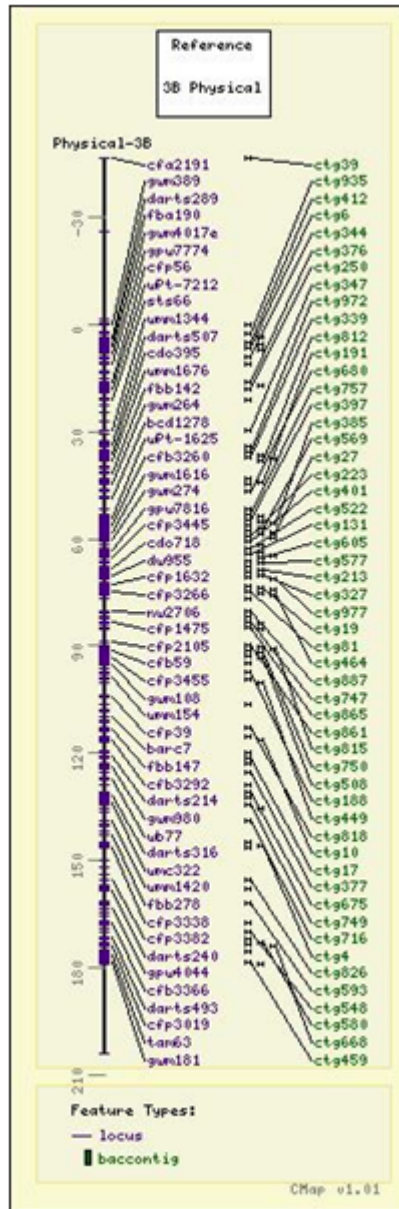
Databases and Online Tools

Dave Matthews
USDA-ARS
Cornell University

Databases and Online Tools

- Contig-centric view
 - Each contig is a separate map, showing the positions of the BACs and the markers. Also shows which deletion bin the contig is in.
- Chromosome-centric view
 - Positions of markers and contigs on the chromosome.


Chromosome-centric View



Marker Information

GrainGenes Probe Report: CFP54

[[Printable Version](#)] [[Submit comment/correction](#)]

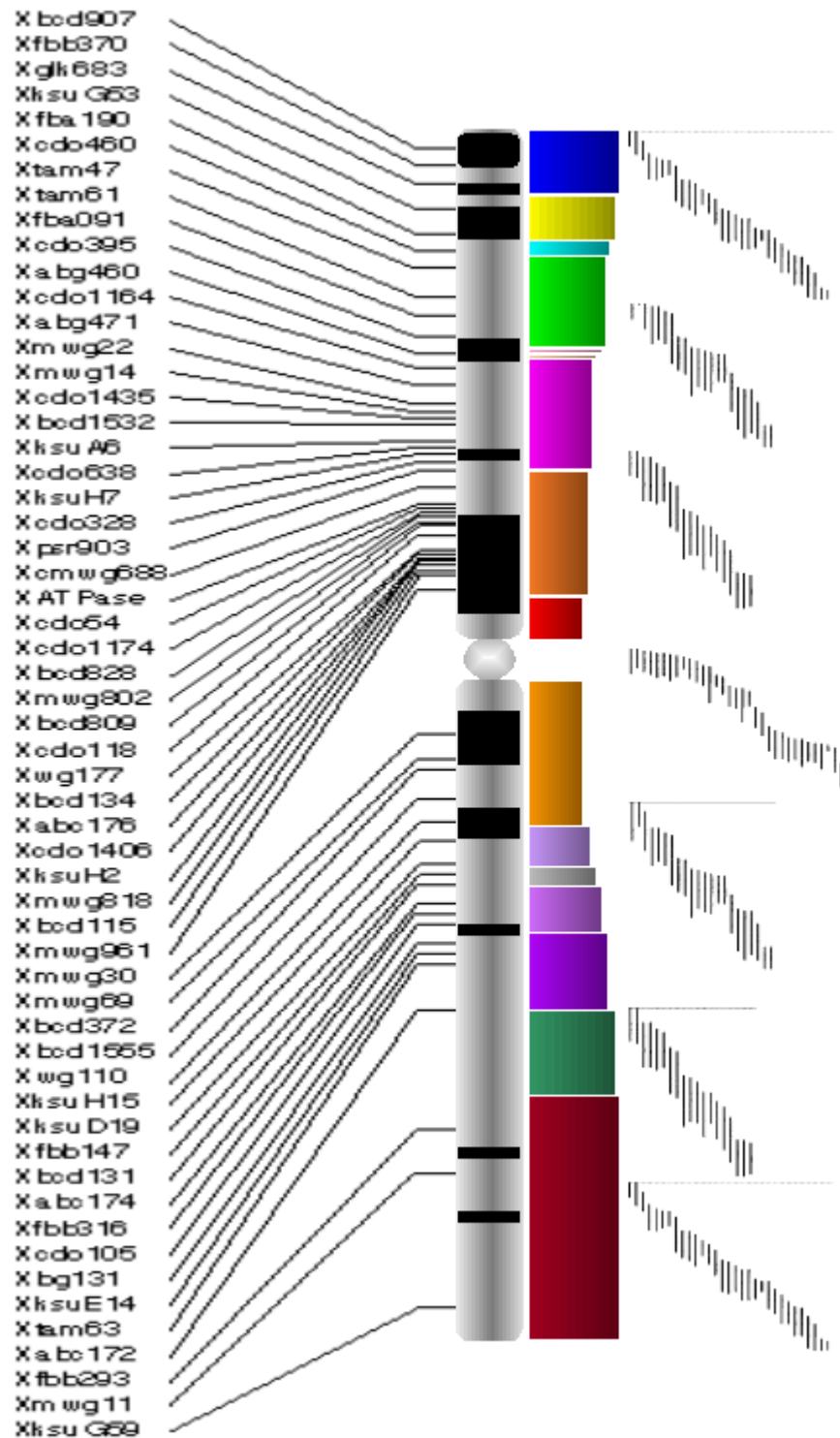
Probe CFP54 [[Marker Report](#)]
Locus [cfp54](#)
Reference  Paux E et al. (2008) A Physical Map of the 1-Gigabase Bread Wheat Chromosome 3B Science 322:101-104.
Type PCR
PCR primers Left (5'-3'):TGGCATAGTCAGAATCTTGGC
Right (5'-3'):TTTAGCCAACAGGGAACAAC
STS size 334
Sequence [DX372898](#)

GrainGenes Sequence Report: DX372898

[[Printable Version](#)] [[Submit comment/correction](#)]

Sequence DX372898
External Databases [Data at GenBank](#)
[Data at EMBL](#)
[Data at DDBJ](#)
DB Locus Source: Triticum aestivum (bread wheat)
Remark
Keyword GSS
Species [Triticum aestivum](#)
Cultivar Chinese Spring
Clone Library Triticum aestivum chromosome 3B-specific BAC library (TA3B)
Data Source [genbank](#) Updated Nov 2006
Title 3B_038_O17_RM1 Triticum aestivum chromosome 3B-specific BAC library (TA3B) Triticum aestivum genomic clone 3B_038_O17, genomic survey sequence.
Clone 3B_038_O17
Probe [CFP54](#)
Remark DB_xref: taxon:4565
Feature: source: mol_type = 'genomic DNA';
Locus Comment: Contact: Catherine Feuillet; Amelioration et Sante des Plantes; INRA; UMR INRA-UBP 1095, Domaine de Crouelle, 234, Avenue du Brezet; 63100 Clermont-Ferrand, France; Tel: 33 4 7362 4684; Fax: 33 4 7362 4453; Email: catherine.feUILLET@clermont.inra.fr; Insert Length: 591
Std Error: 0.00; Plate: 038 row: O column: 17; Seq primer: M13 reverse;
Class: BAC ends; High quality sequence stop: 591.
Note: Vector: plndigoBAC; Site_1: HindIII; Site_2: HindIII; see Safar et al. (2004) Dissecting large and complex genomes: flow sorting and BAC cloning of individual chromosomes from bread wheat. Plant J., 39, 960-8.
DNA aacgcacaaatgaaagaaacatagagatgcaatctacggctggttgcgt
ccatggcattccaccagtcctccatcacatccttttgagttctccttg

Showing Deletion Bins



Proposed Standards

- Contig-centric view
 - Each contig is a separate map, showing the positions of the BACs and the markers. Also shows which deletion bin the contig is in.
- Chromosome-centric view
 - Positions of markers and contigs on the chromosome.
 - Markers link to contigs and BACs
 - Deletion bins shown
 - Links to BAC sequence data